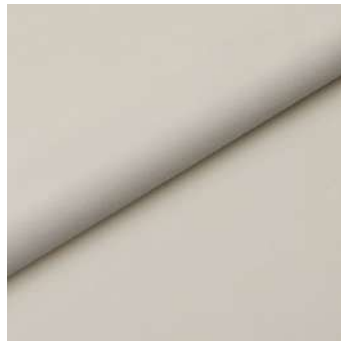


PIANO



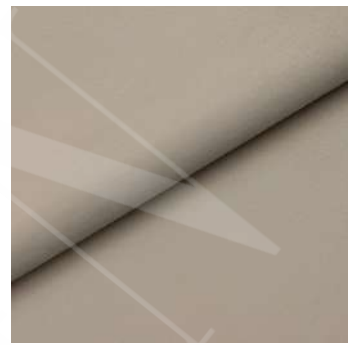
Piano 01



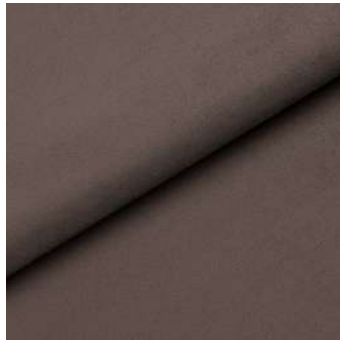
Piano 02



Piano 03



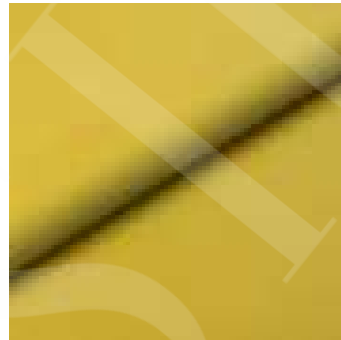
Piano 04



Piano 05



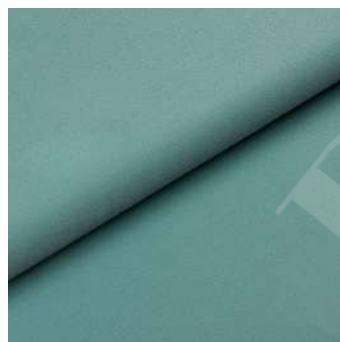
Piano 06



Piano 07



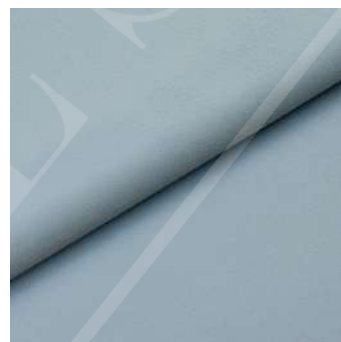
Piano 08



Piano 09



Piano 10



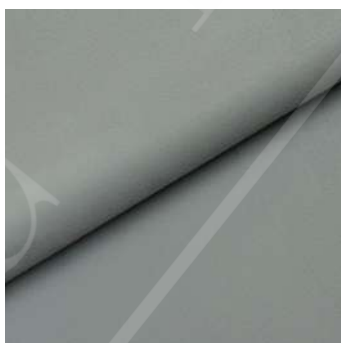
Piano 11



Piano 12



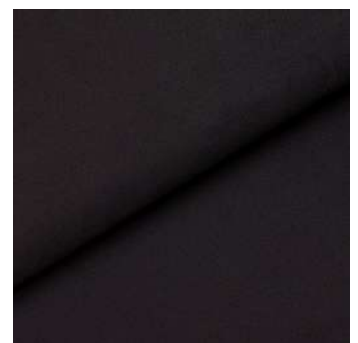
Piano 13



Piano 14



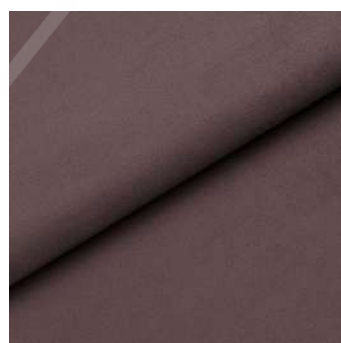
Piano 15



Piano 16



Piano 17



Piano 18

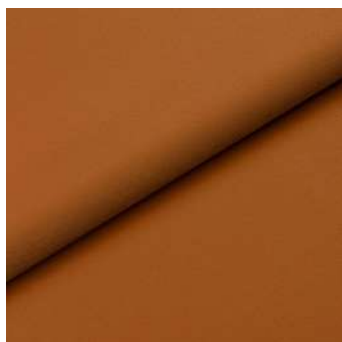


Piano 19

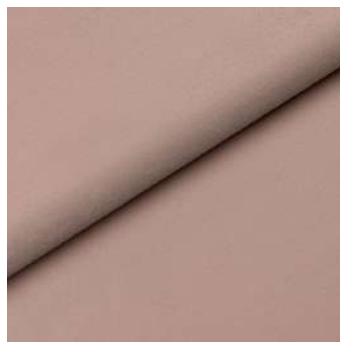


Piano 20

PIANO



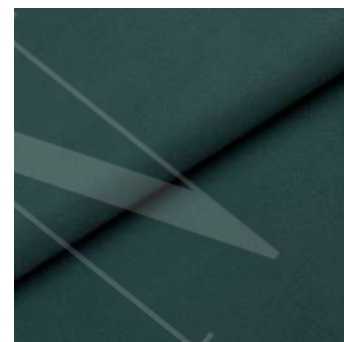
Piano 21



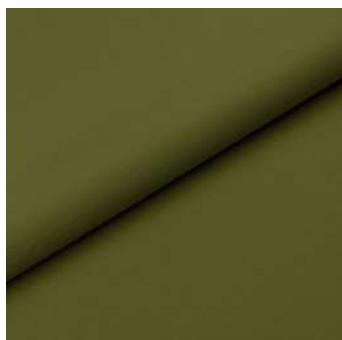
Piano 22



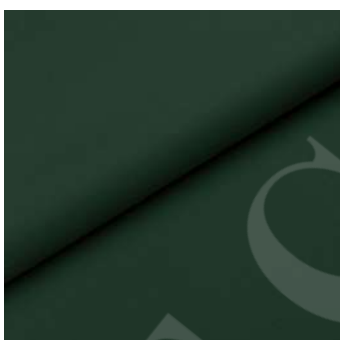
Piano 23



Piano 24



Piano 25



Piano 26



Piano 28

Rodzaj tkaniny	welwet dzianinowy
Skład	100% Polyester
Gramatura	310 g/m ² ± 5%
Szerokość	142 cm ± 2 cm
Przesuwalność nitok	osnowa 3 mm / wątek 3 mm
Test martindale	>60 000
Odporność na tarcie	na sucho 4-5 / na mokro 4-5
Wytrzymałość na rozdarcie	osnowa 32 N / wątek 40 N
Wytrzymałość na rozciąganie	osnowa 730 N / wątek 489 N
Odporność na światło	4/5
Pilling	4
Trudnopalność	BS 5852: Part 1: 1979, source 0 (cigarette)



ŁATWE CZYSZCZENIE WODĄ



UTRUDNIONE WCHŁANIANIE PŁYNÓW



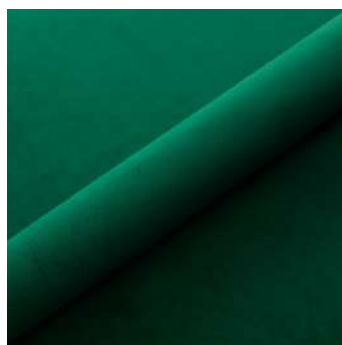
TRUDNOPALNOŚĆ

Technologia :

MAGIC VELVET



N01/03



N01/06



N01/07



N01/09



N01/13



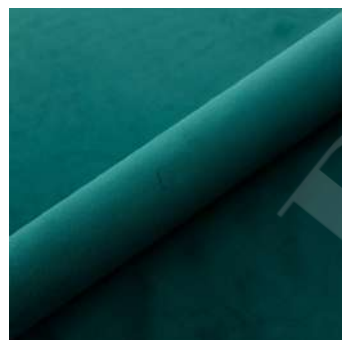
N01/18



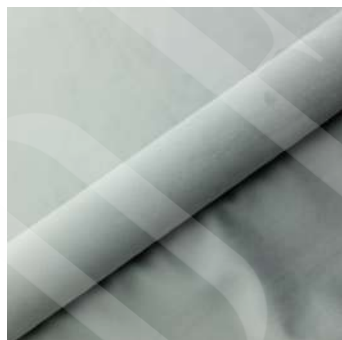
N01/32



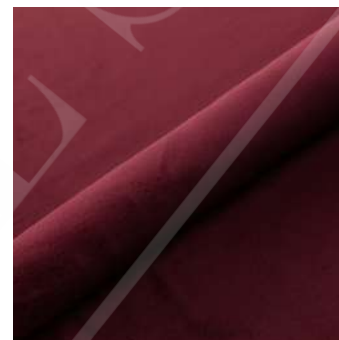
N01/34



N01/35



N01/41



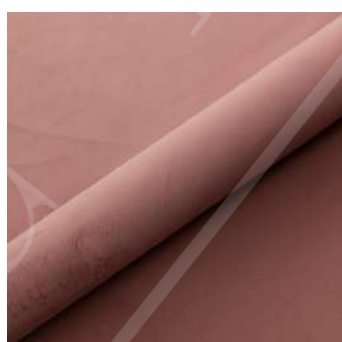
N01/54



N01/57



N01/61



N01/79



rodzaj

Gładkie, Dżianiny, Welwety (plusze)



skład

100% PES



gramatura

300 g/m² ± 5%



szerokość

142 cm ± 3 cm



odporność na ścieranie

Kategoria A (60 000 suwów)



Odporne na plamy



Odporne na zaciągnięcia

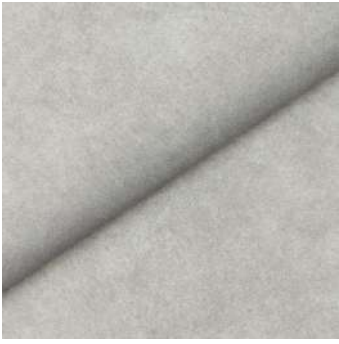


Trudnopalne

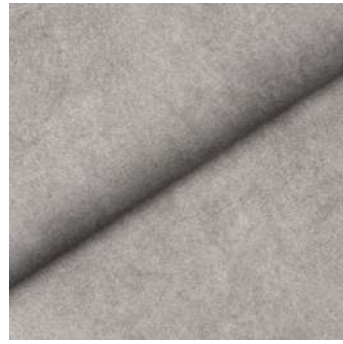


Oeko Tex® Standard 100

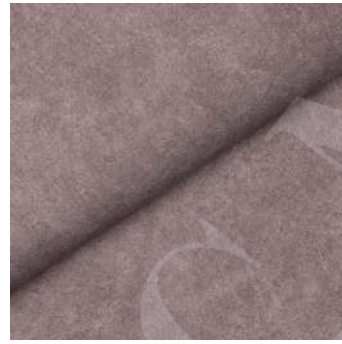
Z O Y A



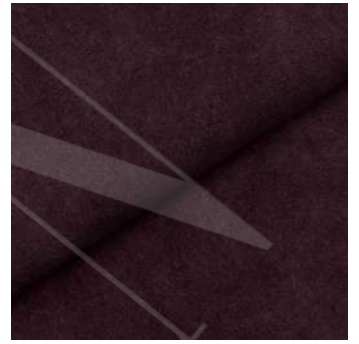
Zoya 01



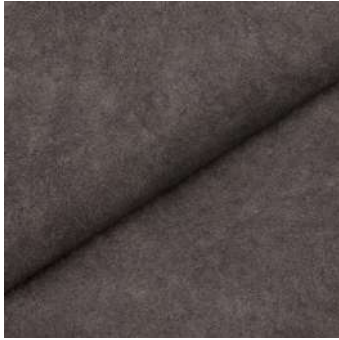
Zoya 02



Zoya 03



Zoya 04



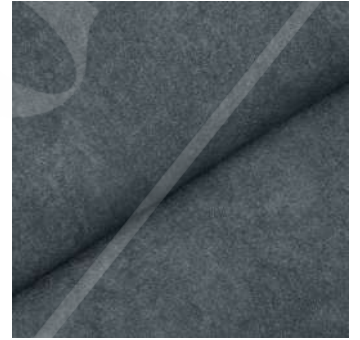
Zoya 05



Zoya 06



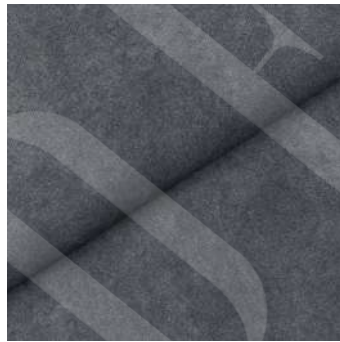
Zoya 07



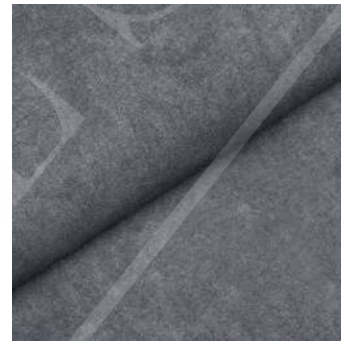
Zoya 08



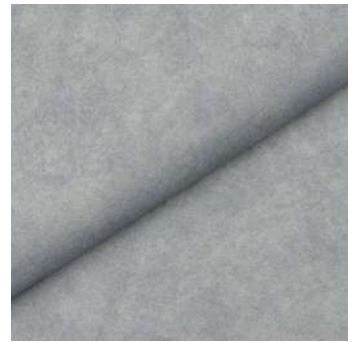
Zoya 09



Zoya 10



Zoya 11



Zoya 12



Zoya 13



Zoya 14



Zoya 15

Rodzaj tkaniny	dzianina
Skład	100% Polyester
Gramatura	390 g/m ² ± 5%
Szerokość	140 cm ± 2 cm
Przesuwalność nitek	osnowa 2,5 mm / wątek 2 mm
Test martindale	50 000 cykli
Odporność na zaciągnięcia	5/5
Odporność na tarcie	na sucho 4 / na mokro 4
Wytrzymałość na rozdarcie	osnowa 44 N / wątek 63 N
Wytrzymałość na rozciąganie	osnowa 691 N / wątek 580 N
Odporność na światło	4/5
Pilling	4
Trudnopalność	BS 5852: Part 1: 1979, source 0 (cigarette)



ŁATWE CZYSZCZENIE WODĄ

Technologia :



PRZYJAZNE ZWIERZĘTOM

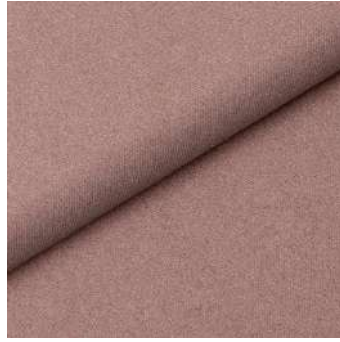


TRUDNOPALNOŚĆ

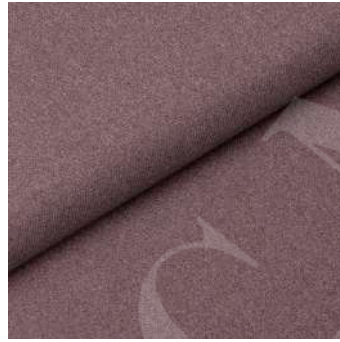
FORRES



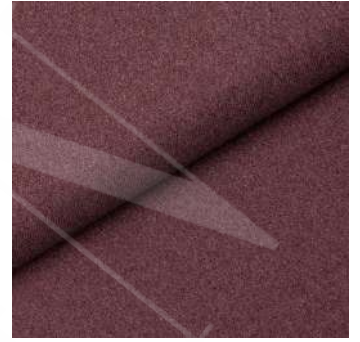
Forres 01



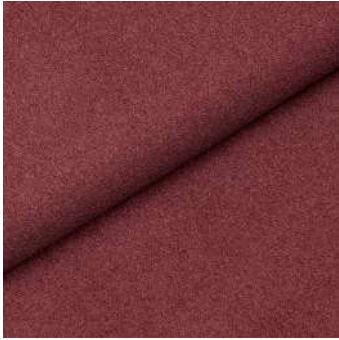
Forres 02



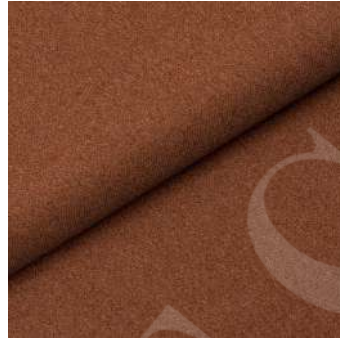
Forres 03



Forres 04



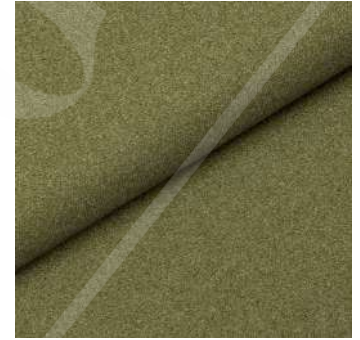
Forres 05



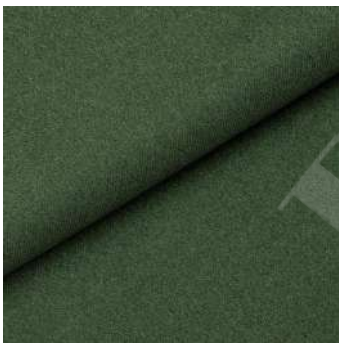
Forres 06



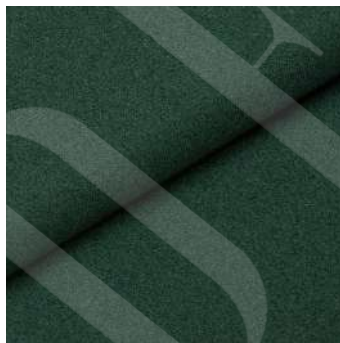
Forres 07



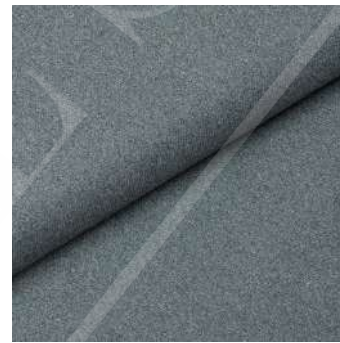
Forres 08



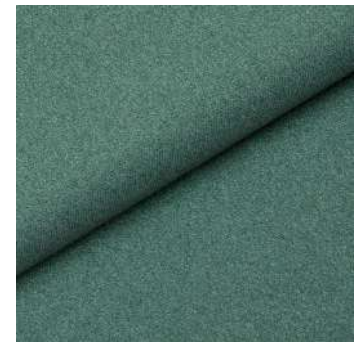
Forres 09



Forres 10



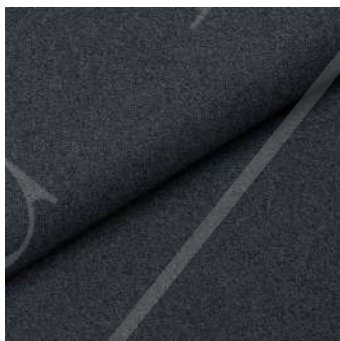
Forres 11



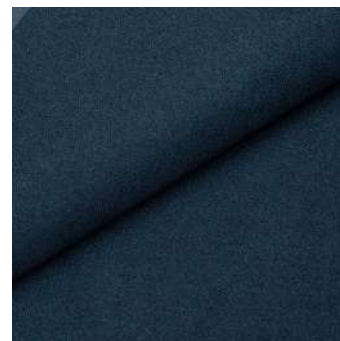
Forres 12



Forres 13



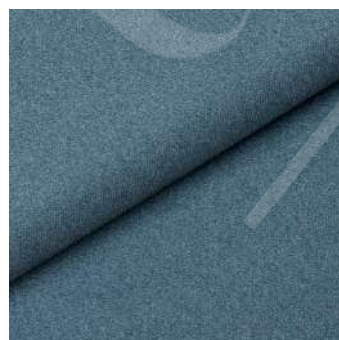
Forres 14



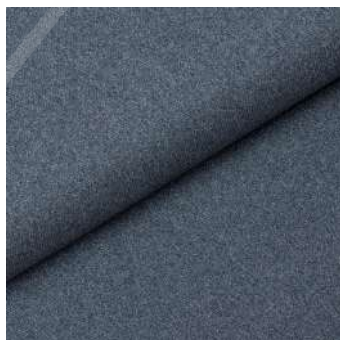
Forres 15



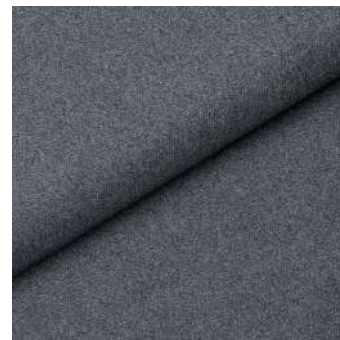
Forres 16



Forres 17



Forres 18



Forres 19

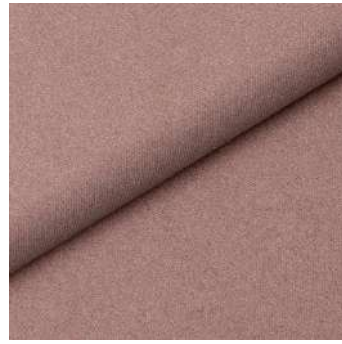


Forres 20

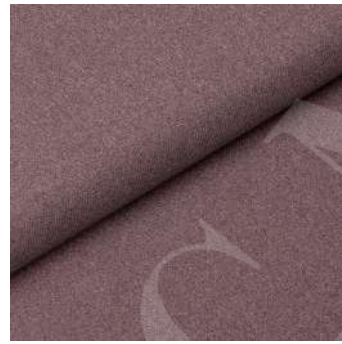
FORRES



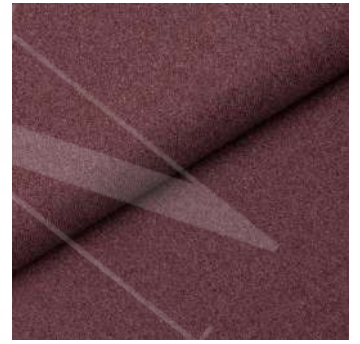
Forres 01



Forres 02



Forres 03



Forres 04



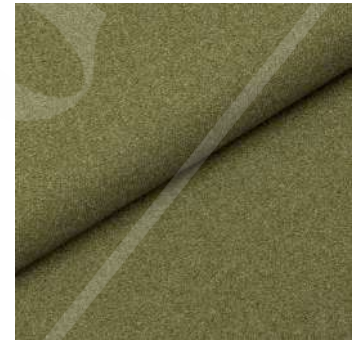
Forres 05



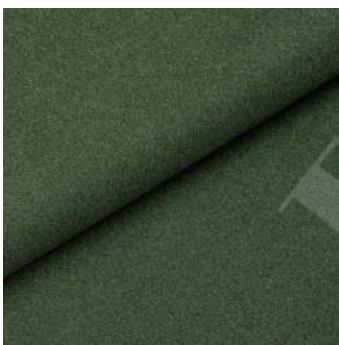
Forres 06



Forres 07



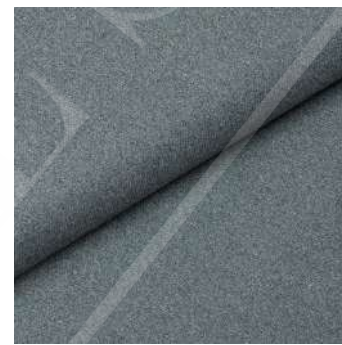
Forres 08



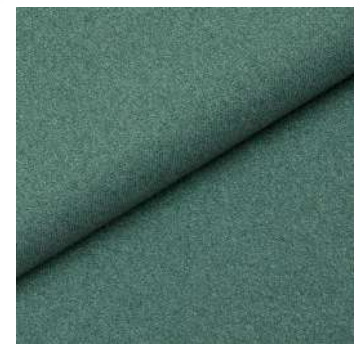
Forres 09



Forres 10



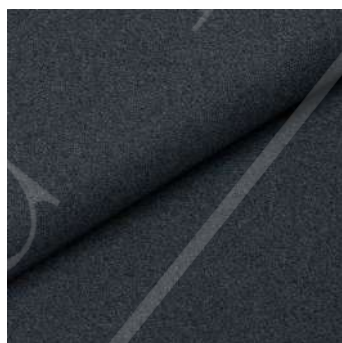
Forres 11



Forres 12



Forres 13



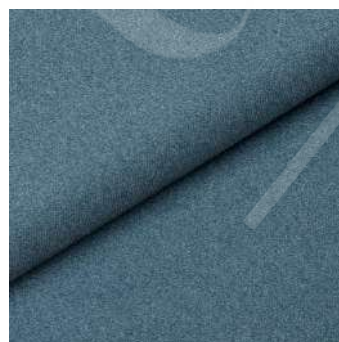
Forres 14



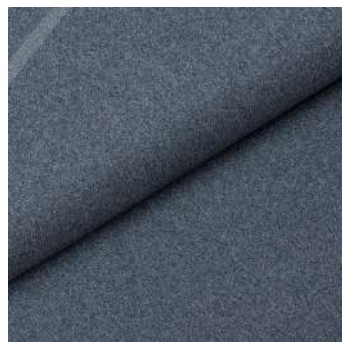
Forres 15



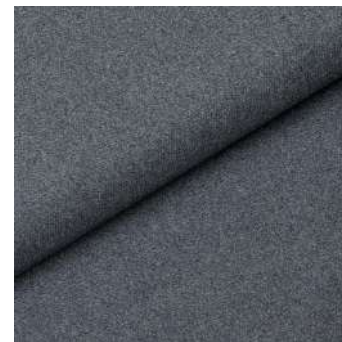
Forres 16



Forres 17



Forres 18



Forres 19



Forres 20

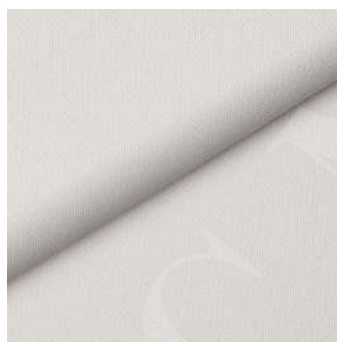
FORRES



Forres 21



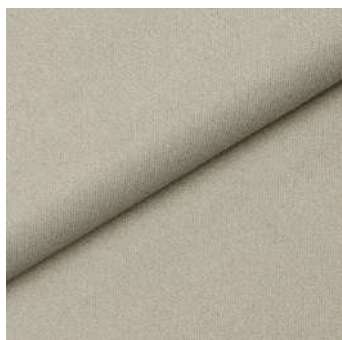
Forres 22



Forres 23



Forres 24



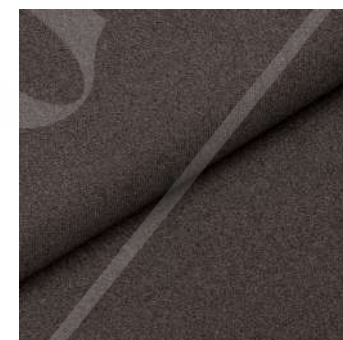
Forres 25



Forres 26



Forres 27



Forres 28

Rodzaj tkaniny	dzianina
Skład	100% polyester
Gramatura	310 g/m ² ± 5%
Szerokość	140 cm ± 2 cm
Przesuwalność nitok	osnowa 2,8 mm / wątek 2,5 mm
Test Martindale'a	60 000 cykli
Odporność na zderzenie	na sucho 4 / na mokro 3/4
Wytrzymałość na rozdarcie	osnowa 63 N / wątek 163 N
Wytrzymałość na rozciąganie	osnowa 412 N / wątek 820 N
Odporność na światło	5
Piling	4/5
Trudnopalność	BS 5852: Part 1: 1979, source 0 (cigarette)

Technologia :

-  ŁATWE CZYSZCZENIE WODĄ
-  UTRUDNIONE WCHŁANIANIE PŁYNÓW
-  TRUDNOPALNOŚĆ

AURORA



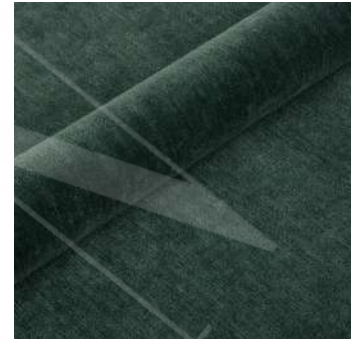
378/01



378/03



378/05



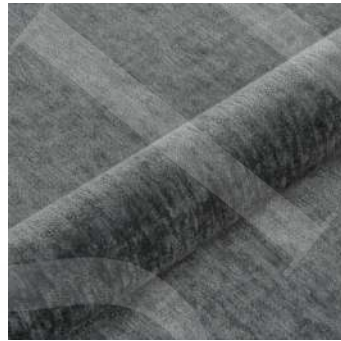
378/06



378/18



378/34



378/36



378/41



378/61



378/85



rodzaj

Gładkie, Szenile



skład

100% PES



gramatura

320 g/m² ± 5%



szerokość

142 ± 3 cm



odporność na ścieranie

50 000 suwów (kat. A)



Odporne na plamy



Odporne na zaciągnięcia



Trudnopalne



Oeko Tex® Standard 100

ASCOT



Nata



Pearl



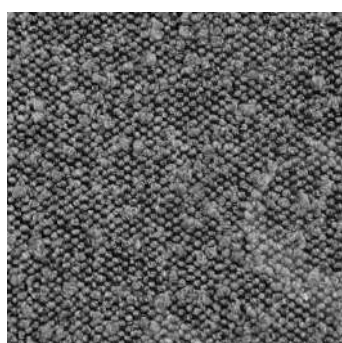
Pink



Toffee



Taupe



Graphite



Mouse



Olive Green



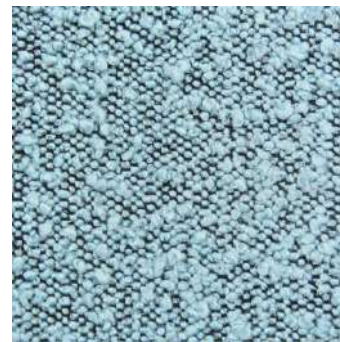
Mostaza



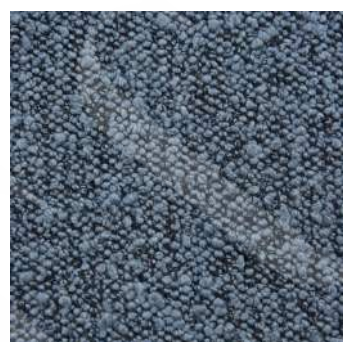
Champagne



Brick



Safira



Atlantic



Black

Kompozycja włókien: 95% Poliester , 5% Acrylic

Gramatura: 855 g/mb

Test wytrzymałości: 80 000 cykli

Odporność kolorów na światło: 5

Odporność na piling: 4



Trudnopalna

N A P O L I



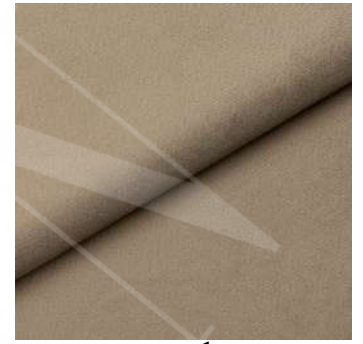
Napoli 01



Napoli 02



Napoli 03



Napoli 04



Napoli 05



Napoli 06



Napoli 07



Napoli 08



Napoli 09



Napoli 10



Napoli 11



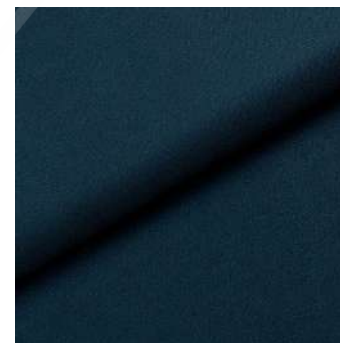
Napoli 12



Napoli 13



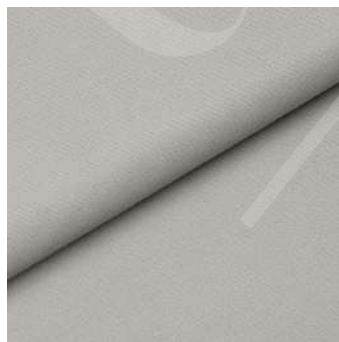
Napoli 14



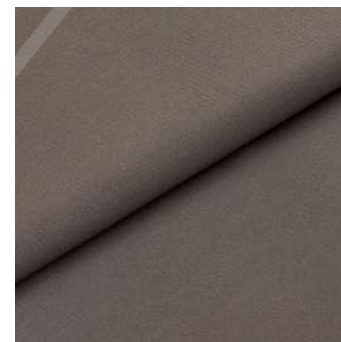
Napoli 15



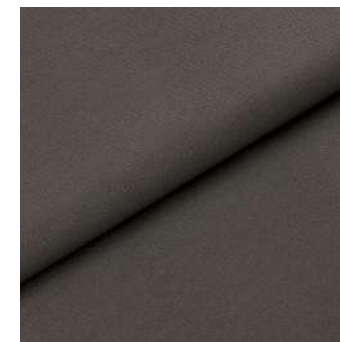
Napoli 16



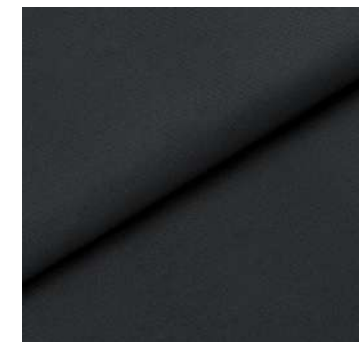
Napoli 17



Napoli 18



Napoli 19

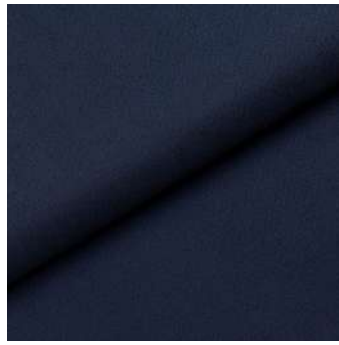


Napoli 20

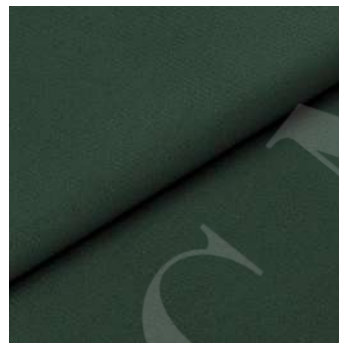
NAPOLI



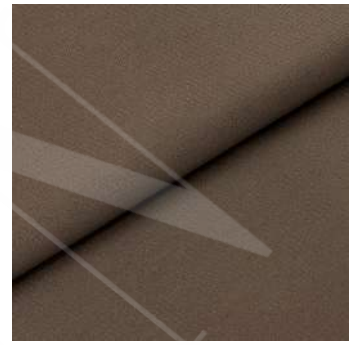
Napoli 21



Napoli 22



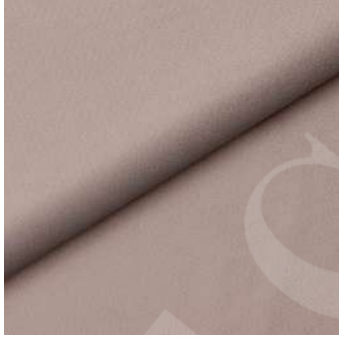
Napoli 23



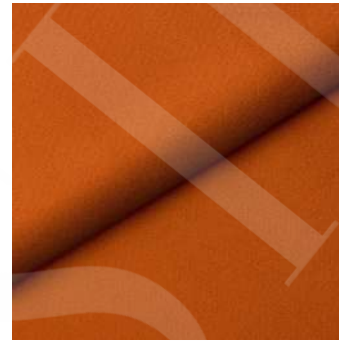
Napoli 24



Napoli 25



Napoli 26



Napoli 27

Rodzaj tkaniny	tkanina welwetowa
Skład	100% Polyester
Gramatura	360 g/m ² ± 5%
Szerokość	140 cm ± 2 cm
Przesuwalność nitek	osnowa 3-4 mm / wątek 3-4 mm
Test martindale	75 000
Odporność na zaciągnięcia	5/5
Odporność na tarcie	na sucho 3-4 / na mokro 3-4
Wytrzymałość na rozdarcie	osnowa 175 N / wątek 160 N
Wytrzymałość na rozciąganie	osnowa 1000 N / wątek 1200 N
Odporność na światło	4/5
Pilling	4
Trudnopalność	BS 5852: Part 1: 1979, source 0 (cigarette)



ŁATWE CZYSZCZENIE WODĄ



UTRUDNIONE WCHŁANIANIE PŁYNÓW

Technologia :



PRZYJAZNE ZWIERZĘTOM

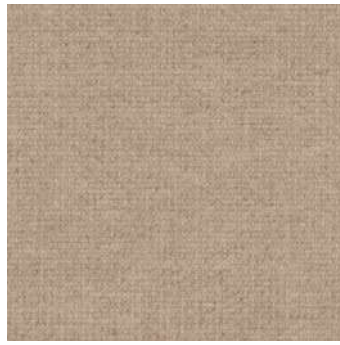


TRUDNOPALNOŚĆ

VINCI



Vinci 01



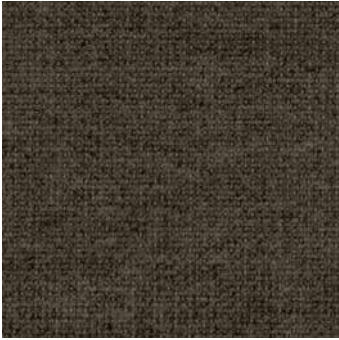
Vinci 02



Vinci 03



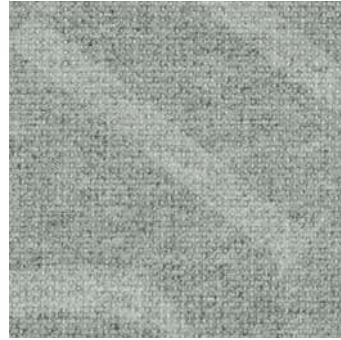
Vinci 04



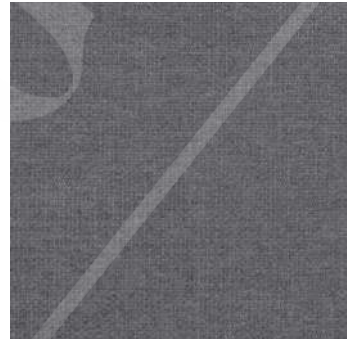
Vinci 05



Vinci 06



Vinci 07



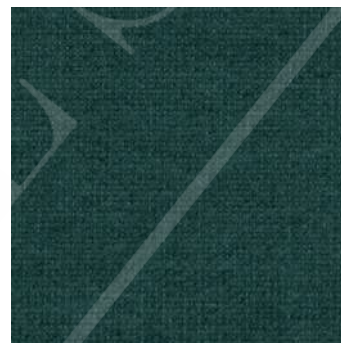
Vinci 08



Vinci 09



Vinci 10



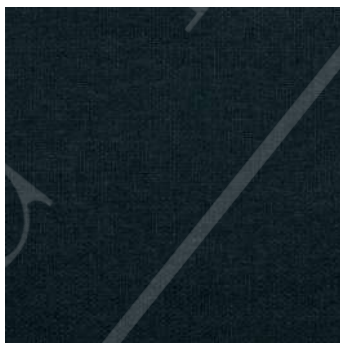
Vinci 11



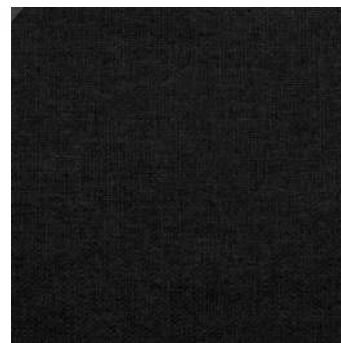
Vinci 12



Vinci 13



Vinci 14



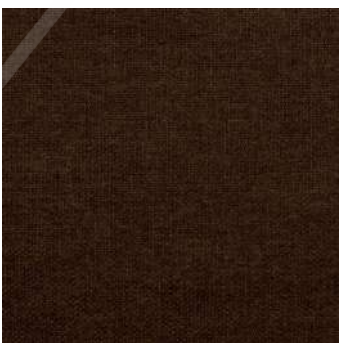
Vinci 15



Vinci 16



Vinci 17



Vinci 18



Vinci 19



Vinci 20



Vinci 21

italsenso

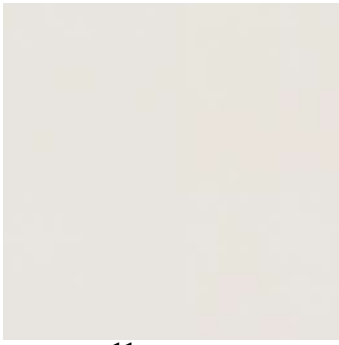
SCHEDA TECNICA
TECHNICAL CARD

Data / Date

10.03.2021

Articolo / Article / <i>Tkanina</i>	Vinci
Composizione / Composition / <i>Kompozycja</i>	100% PL
Peso Gr/mlt / Weight Grs/lmt / <i>Waga gr/mtb</i>	590
Altezza cm / Width cms / <i>Szerokość cm</i>	138/140
Odporność na ścieranie Test Martindale Colour degradation after 3000 rubs: UNI EN ISO 12947 - 2 150 000 Giri / Rubs / <i>Cykli</i> EN 14465, appendix A	
Solidità Luce / <i>Colour Fastness to light</i> / Odporność kolorów na światło UNI EN ISO 105-B02 4 Blue Scale 1/8	
Solidità Sfregamento / <i>Colour Fastness to rubbing</i> / Odporność kolorów na pocieranie UNI EN ISO 105-X12 4/5 Secco / Dry / Sucho Gray Scale 1/5 4 Umido / Wet / Mokro	
Odporność na Pilling Test Pilling Degradation average photographic scale 1/5: 4 UNI EN ISO 12945-2 a 2000 giri / at 2000 revs	

BELLAGIO



Bellagio 01



Bellagio 08



Bellagio 105



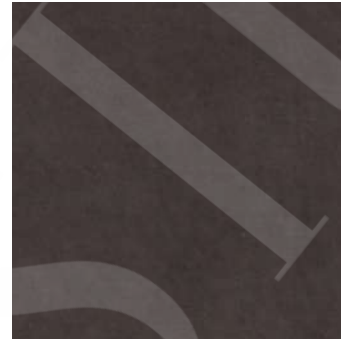
Bellagio 11



Bellagio 13



Bellagio 131



Bellagio 14



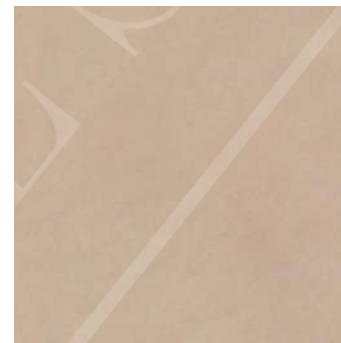
Bellagio 156



Bellagio 213



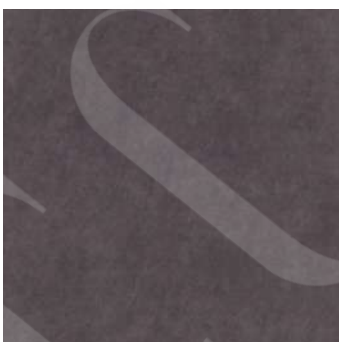
Bellagio 242



Bellagio 245



Bellagio 248



Bellagio 271



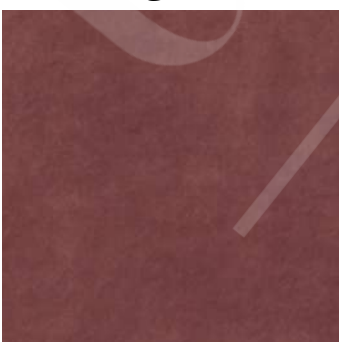
Bellagio 28



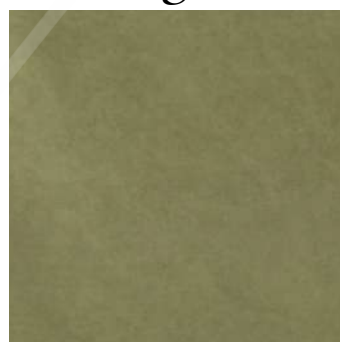
Bellagio 300



Bellagio 321



Bellagio 324



Bellagio 355



Bellagio 451



Bellagio 50

BELLAGIO



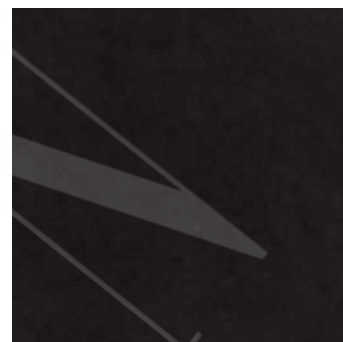
Bellagio 503



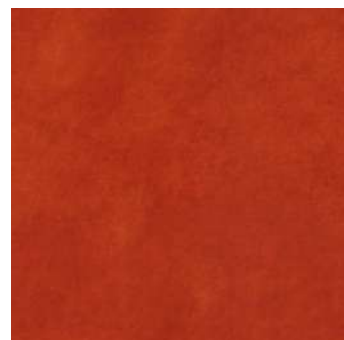
Bellagio 514



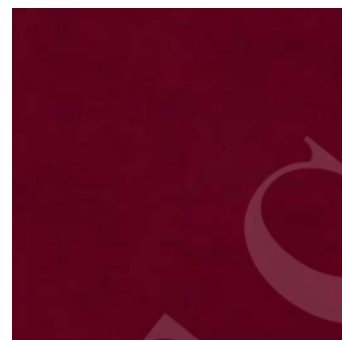
Bellagio 515



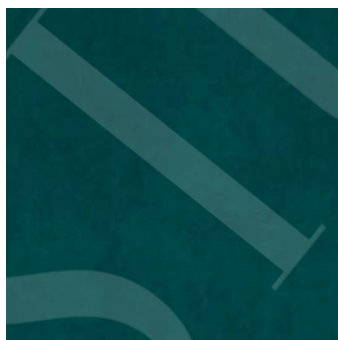
Bellagio 59



Bellagio 62



Bellagio 65



Bellagio 68



Bellagio 80



Bellagio 81

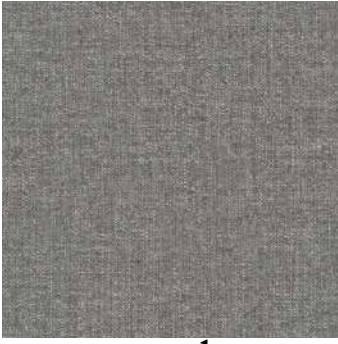


Bellagio 82

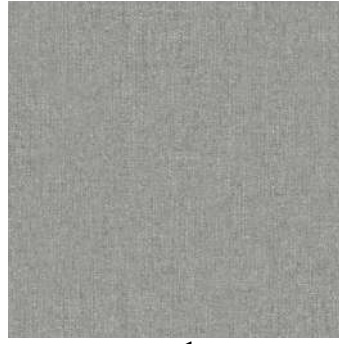
- **SKŁAD:** 100% POLIESTER
- **SZEROKOŚC:** 140 cm. UNE EN 1773
- **WAGA M2:** 404 gr/m²
- **ODPORNOSC NA DRAPANIE:** > 20N (BS 4303) - > 3 (DIN 53859-5)
- **PRZESUWALNOŚĆ NITEK:** Osnowa: 2,9 Wątek: 3,0 PR EN ISO 13936-2 (mm)
- **ODPORNOSC NA ROZCIAGANIE:** Osnowa: 1310,00 - Wątek: 1356,00 UNE EN ISO 13934-1
- **ODPORNOSC NA TARCIE:** >100.000 cykli UNE EN ISO 12947
- **ODPORNOSC NA PILLING:** 5 (5 max) no pilling (ISO DIS 12945-2)
- **TRWAŁOŚĆ BARWNIKA NA TARCIE:** 5 (5 max) dobra (ISO 105-X12)
- **TRWAŁOŚĆ BARWNIKA NA SWIATŁO:** 5 dobra (ISO 105-B02)



A M A R A L



Amaral 10



Amaral 271



Amaral 300



Amaral 305



Amaral 314



Amaral 324



Amaral 347



Amaral 348



Amaral 349



Amaral 395



Amaral 407



Amaral 51



Amaral 56



Amaral 60



Amaral 710



Amaral 790



Amaral 90

A M A R A L

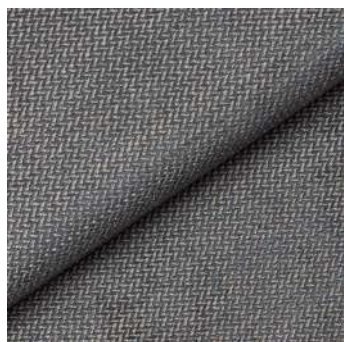
- **SKŁAD:** 96% POLIESTER, 4% BAWĘŁNA
- **SZEROKOSC:** 140 cm. UNE EN 1773
- **WAGA M2:** 551 gr/m2
- **ODPORNOSC NA DRAPANIE:** > 20N (BS 4303) - > 3 (DIN 53859-5)
- **PRZESUWANIE SZWA:** < 4 (BS 3320) - < 6 (DIN 53868)
- **ODPORNOSC NA ROZCIAGANIE:** > 350N (ISO 13934-1)
- **ODPORNOSC NA TARCIE:** 60000 cykli UNE EN ISO 12947
- **ODPORNOSC NA PILLING:** 5 (5 max) no pilling (ISO DIS 12945-2)
- **TRWAŁOSC BARWNIKA NA TARCIE:** 5 (5 max) dobra (ISO 105-X12)
- **TRWAŁOSC BARWNIKA NA SWIATŁO:** 5 dobra (ISO 105-B02)



R O J A



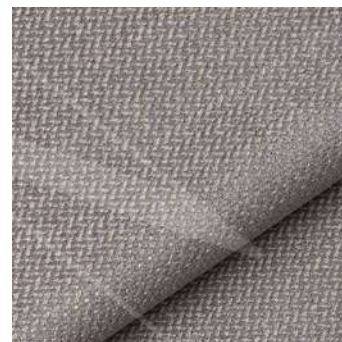
Roja 01



Roja 02



Roja 03



Roja 04



Roja 05



Roja 06



Roja 07



Roja 08

Rodzaj tkaniny	tkanina szenilowa
Skład	56% akryl, 39% polyester, 5% wiskoza
Gramatura	460 g/m ² ± 5%
Szerokość	140 cm ± 2 cm
Przesuwalność nitok	osnowa 2,8 mm / wątek 3,4 mm
Test martindale	35 000 cykli
Odporność na tarcie	na sucho 4 / na mokro 3/4
Wytrzymałość na rozdarcie	osnowa 214 N / wątek 76 N
Wytrzymałość na rozciąganie	osnowa 750 N / wątek 700 N
Odporność na światło	5
Pilling	4/5

Technologia :

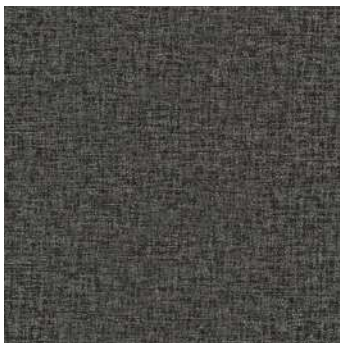


ŁATWE CZYSZCZENIE WODĄ

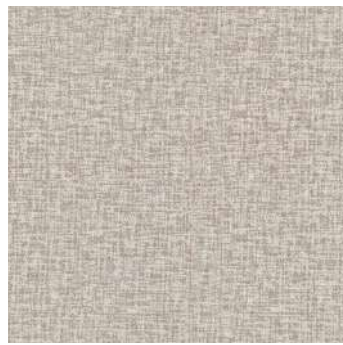


UTRUDNIONE WCHŁANIANIE PŁYNÓW

VICTORY



Victory 10



Victory 248



Victory 271



Victory 28



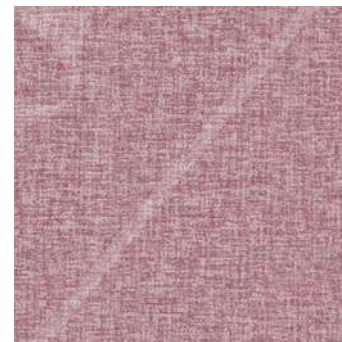
Victory 30



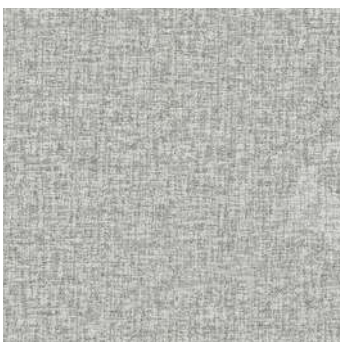
Victory 314



Victory 32



Victory 324



Victory 336



Victory 342



Victory 347



Victory 348



Victory 349



Victory 395



Victory 407



Victory 56



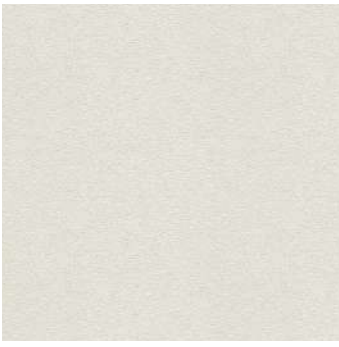
Victory 60



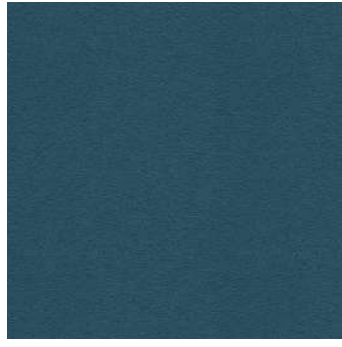
Victory 732

- SKŁAD: 100% POLIESTER
- SZEROKOŚĆ: 140 cm. UNE EN 1773
- WAGA M2: 527 gr/m2
- ODPORNOSC NA DRAPANIE: > 20N (BS 4303) - > 3 (DIN 53859-5)
- PRZESUWANIE SZWA: < 4 (BS 3320) - < 6 (DIN 53868)
- ODPORNOSC NA ROZCIAGANIE: > 350N (ISO 13934-1)
- ODPORNOSC NA TARCIE: 40000 cykli UNE EN ISO 12947
- ODPORNOSC NA PILLING: 5 (5 max) no pilling (ISO DIS 12945-2)
- TRWAŁOSC BARWNIKA NA TARCIE: 4-5 (5 max) dobra (ISO 105-X12)
- TRWAŁOSC BARWNIKA NA SWIATŁO: 4-5 dobra (ISO 105-B02)

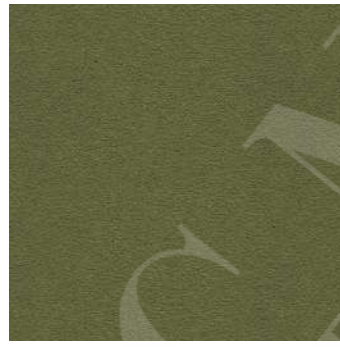
VENICE



Venice 50



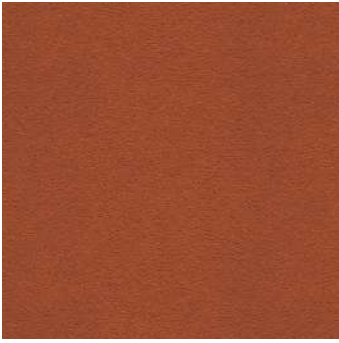
Venice 510



Venice 61



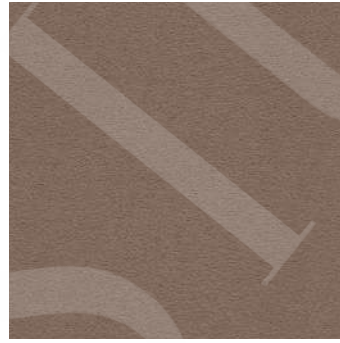
Venice 625



Venice 62



Venice 156



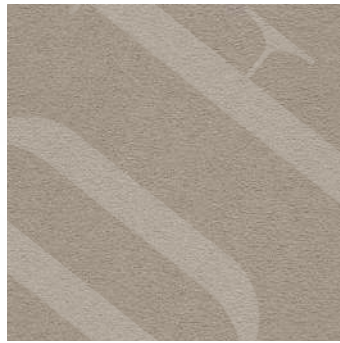
Venice 111



Venice 618



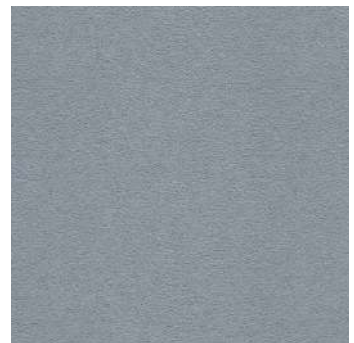
Venice 250



Venice 80



Venice 514



Venice 94



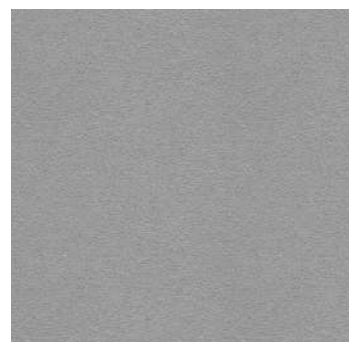
Venice 53



Venice 07



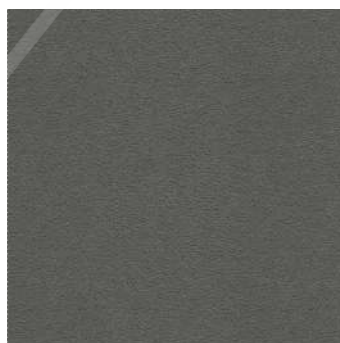
Venice 11



Venice 13



Venice 131



Venice 213



Venice 271

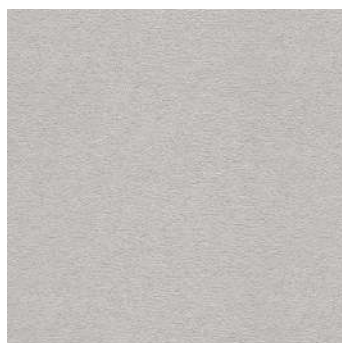


Venice 300

VENICE



Venice 324



Venice 336



Venice 339



Venice 349



Venice 43



Venice 46



Venice 69



Venice 91

- **SKŁAD:** 71% POLIESTER, 18% MODAKRYL, 8% RECYKLING BAWĘLNA, 3% POLIAMID
- **SZEROKOSC:** 140 cm. UNE EN 1773
- **WAGA M2:** 518 gr/m²
- **ODPORNOSC NA DRAPANIE:** >20N (BS4303) - >3 (DIN 53859-5)
- **ODPORNOSC NA ROZCIAGANIE:** >350N (ISO13934-1)
- **ODPORNOSC NA TARCIE:** 60.000 cykli UNE EN ISO 12947
- **ODPORNOSC NA PILLING:** 5 (5 max) no pilling (ISO DIS 12945-2)
- **TRWAŁOSC BARWNIKA NA TARCIE:** 4-5 (5 max) dobra (ISO 105-X12)
- **TRWAŁOSC BARWNIKA NA SWIATŁO:** 4-5 dobra (ISO 105-B02)



LAGO



Lago 01



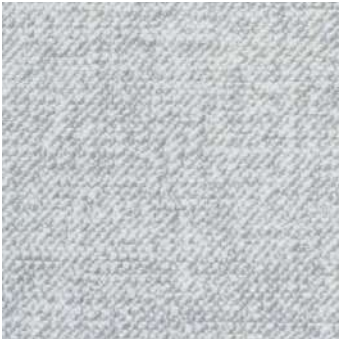
Lago 02



Lago 03



Lago 04



Lago 05



Lago 06



Lago 07



Lago 08



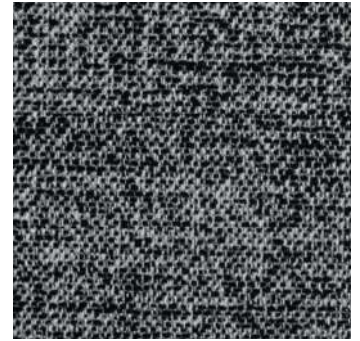
Lago 09



Lago 10



Lago 11



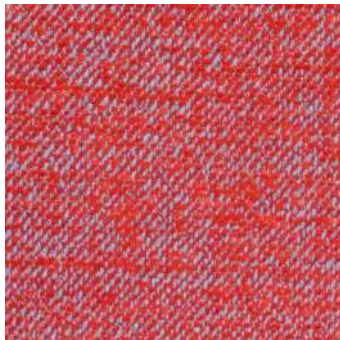
Lago 12



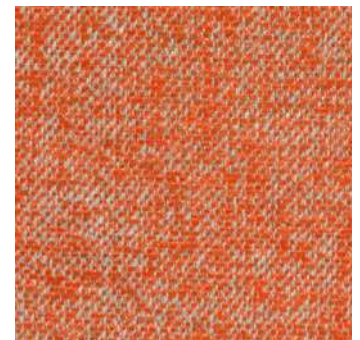
Lago 13



Lago 14



Lago 15



Lago 16



Lago 17



Lago 18



Lago 19



Lago 20

LAGO



Lago 21



Lago 22

Articolo / Article / <i>Tkanina</i>	Lago		
Composizione / Composition / <i>Kompozycja</i>	58% CO 42% PL		
Peso Gr/mtl / Weight Grs/lmt / <i>Waga gr/mtb</i>	690		
Altezza cm / Width cms / <i>Szerokość cm</i>	138/140		
Odporność na ścieranie			
Test Martindale	Colour degradation after 3000 rubs:		
UNI EN ISO 12947 - 2	100 000	Giri / Rubs / <i>Cykli</i>	
EN 14465, appendix A			
Solidità Luce / Colour Fastness to light / <i>Odporność kolorów na światło</i>			
UNI EN ISO 105-B02			5
Blue Scale 1/8			
Solidità Sfregamento / Colour Fastness to rubbing / <i>Odporność kolorów na pocieranie</i>			
UNI EN ISO 105-X12	4/5	Secco / Dry / <i>Sucho</i>	
Gray Scale 1/5	4/5	Umido / Wet / <i>Mokro</i>	
Odporność na Pilling			
Test Pilling	Degradation average photographic scale 1/5:		4/5
UNI EN ISO 12945-2	a 2000 giri / at 2000 revs		

Manutenzione / Maintenance / *Sposób czyszczenia*

Note/Notes: Dimensional stability to dry washing (UNI EN ISO 3175)
Stabilność wymiaru przy praniu chemicznym (UNI EN ISO 3175)
 warp / wątek: +/- % weft / osnowa: +/- %
 Dimensional stability to washing (UNI EN ISO 6330)
Stabilność wymiaru przy praniu wodnym (UNI EN ISO 6330)
 warp / wątek: +/- % weft / osnowa: +/- %

* The results are tested in the laboratory and they must be considered as indicative.

M O M B A S A



Mombasa 01



Mombasa 02



Mombasa 03



Mombasa 04



Mombasa 05



Mombasa 06



Mombasa 07



Mombasa 08



Mombasa 09



Mombasa 10



Mombasa 11



Mombasa 12



Mombasa 13



Mombasa 14



Mombasa 15



Mombasa 16



Mombasa 17



Mombasa 18



Mombasa 19

M O M B A S A

Articolo / Article / <i>Tkanina</i>	Mombasa
Composizione / Composition / <i>Kompozycja</i>	49% PL 35% VI 16% CO
Peso Gr/mlt / Weight Grs/lmt / <i>Waga gr/mtb</i>	591
Altezza cm / Width cms / <i>Szerokość cm</i>	138/140

Odporność na ścieranie

Test Martindale Colour degradation after 3000 rubs:
UNI EN ISO 12947 - 2 **100 000** Giri / Rubs / *Cykli*
EN 14465, appendix A

Solidità Luce / Colour Fastness to light / *Odporność kolorów na światło*

UNI EN ISO 105-B02 **4/5**
Blue Scale 1/8

Solidità Sfregamento / Colour Fastness to rubbing / *Odporność kolorów na pocieranie*

UNI EN ISO 105-X12 **4/5** Secco / Dry / *Sucho*
Gray Scale 1/5 **4** Umido / Wet / *Mokro*

Odporność na Pilling

Test Pilling Degradation average photographic scale 1/5: **4/5**
UNI EN ISO 12945-2 a 2000 giri / at 2000 revs

Manutenzione / Maintenance / *Sposób czyszczenia*



Note/Notes: Dimensional stability to dry washing (UNI EN ISO 3175)
Stabilność wymiaru przy praniu chemicznym (UNI EN ISO 3175)
warp / wątek: +/- % weft / osnowa: +/- %
Dimensional stability to washing (UNI EN ISO 6330)
Stabilność wymiaru przy praniu wodnym (UNI EN ISO 6330)
warp / wątek: +/- % weft / osnowa: +/- %

* The results are tested in the laboratory and they must be considered as indicative.